

Andreas Hövelmann



for guitar

Everyday

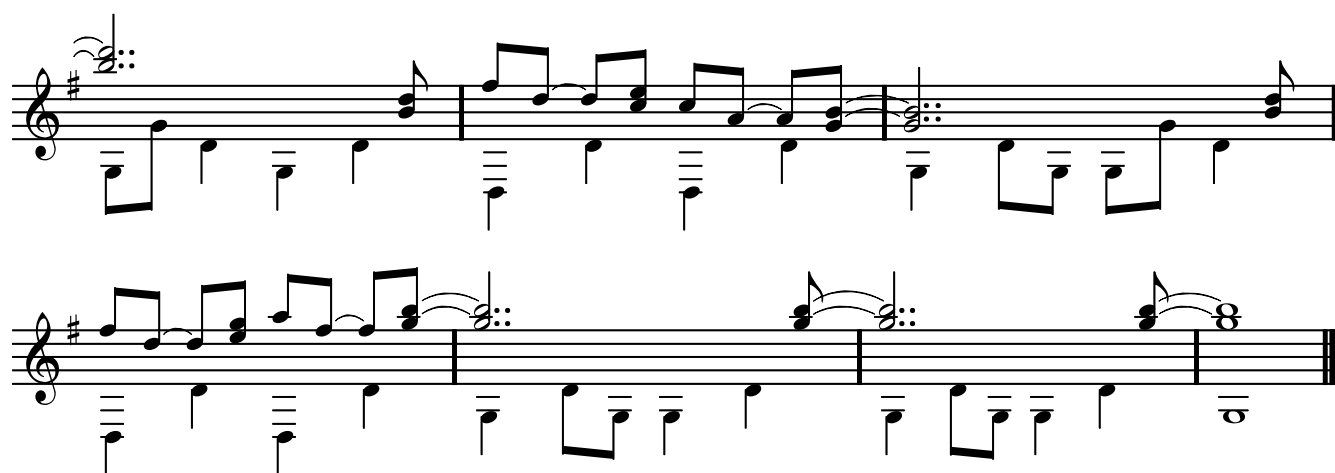
for guitar

Andreas Hövelmann

Tuning: D-G-D-g-h-d / D-G-D-g-b-d

♩ = 80

The musical score for 'Everyday' is written for guitar in D major (one sharp) and 6/8 time. It consists of seven staves of music. The first staff begins with a double bar line and repeat dots. The notation includes various rhythmic values such as eighth and sixteenth notes, as well as rests. Chords are indicated by vertical lines with dots above them. A key signature change to D minor (two flats) is shown in the third staff. A measure with a circled '8' and a slur over it appears in the fifth staff. The score concludes with a double bar line and repeat dots at the end of the seventh staff.



Everyday

for guitar

Andreas Hövelmann

Tuning: D-G-D-g-h-d / D-G-D-g-b-d

♩ = 80

The guitar score for 'Everyday' is written for a six-string guitar in D major (one sharp) and 4/4 time. It consists of seven staves of music. The first staff begins with a double bar line and a key signature change to one sharp. The music features a mix of eighth and sixteenth notes, often beamed together, and rests. Fingering numbers (1-4) are indicated above many notes. The score includes repeat signs and a final double bar line at the end of the seventh staff.

[illegible]

A musical score for the song 'The Rose Tree'. It features a treble and bass staff. The treble staff has a key signature of one sharp (F#) and a 4/4 time signature. The melody is written in a simple, folk-like style with many beamed eighth and sixteenth notes. The bass staff provides a simple harmonic accompaniment with mostly whole and half notes. The score includes a repeat sign with first and second endings. The first ending leads back to the beginning of the melody, and the second ending leads to the final cadence. The piece concludes with a double bar line.